

A G E N D A

Standing Advisory Council for Religious Education (SACRE)

Date: **Monday, 7th March, 2005**

Time: **2.00 p.m.**

Place: **Council Chamber, Brockington, 35
Hafod Road, Hereford**

Notes: Please note the **time, date** and **venue** of
the meeting.

For any further information please contact:

*Paul James, Members' Services,
Brockington, 35 Hafod Road, Hereford Tel:
01432 260 460 Fax: 01432 260286*

e-mail: pjames@herefordshire.gov.uk

**County of Herefordshire
District Council**

AGENDA

for the Meeting of the Standing Advisory Council for Religious Education (SACRE)

To: Councillor J. Stone (Chairman)

Members: Cllr Mrs. W.U. Attfield, Mrs. C. Ault, Revd. P. Barlow, Mrs. J. Brown, Father M Donnelly, Dr. D. Goodman, Cllr P.E. Harling, Ms. K. Mayclothling, Mrs S McCamley, Mrs. G. Morris, Mrs A. Mundy, Mr. Z. Pandor, Mr. J. Rendall, Mr M. Rollnick and Revd. I. Terry

	Pages
1. APOLOGIES FOR ABSENCE To receive apologies for absence.	
2. NAMED SUBSTITUTES (IF ANY) To receive details any details of Members nominated to attend the meeting in place of a Member of the Committee.	
3. MINUTES To approve and sign the Minutes of the meeting held on 29th November, 2004.	1 - 6
4. RESPONSE TO WRITTEN PUBLIC QUESTIONS (IF ANY) To answer any pre-received written questions from members of the public.	
5. OFFICER SUPPORT TO SACRE To receive an oral report on staffing proposals to service SACRE.	
6. PRESENTATION ON TEACHING RELIGIOUS EDUCATION IN SPECIAL SCHOOLS To receive a presentation on the teaching of Religious Education in Special Schools.	
7. ISSUES ARISING FROM THE QCA SACRE ANNUAL CONFERENCE The Consultant for Religious Education to give an overview of issues discussed at the QCA SACRE Annual Conference held in London, 9th December, 2004.	
8. AN EVALUATION OF THE WORK OF SACRE'S To debate issues raised in the Ofsted publication "An evaluation of the Work of SACREs", copies of which were issued to Members at or after the last meeting, and to consider the recent QCA publication "SACREs and Self-Evaluation: A Guide", copies of which will be issued at the meeting.	
(Copies of the above publications are available from the QCA website, at	

	the meeting or on request from Members Service.)	
9.	MONITORING OF RELIGIOUS EDUCATION IN SCHOOLS	7 - 8
	The Consultant for Religious Education will report on the monitoring of RE in a cross section of Herefordshire Schools.	
10.	EXAMINATION RESULTS IN RELIGIOUS STUDIES 1999 TO 2004	9 - 12
	To inform SACRE of Herefordshire's examination results in Religious Studies for the period 1999 to 2004 when compared to the national trend.	
11.	RELIGIOUS EDUCATION CO-ORDINATORS MEETING - UPDATE	
	To receive oral reports on the RE Co-ordinators meeting held 30th November, 2004.	
12.	AREA WIDE INSPECTION (14-19)	
	To inform SACRE of the Area Wide Inspection of 14 – 19 year old provision across Herefordshire and SACREs involvement in the inspection.	
13.	EDUCATION BUDGET FOR 2005/06 - IMPLICATION FOR SACRE	
	The Head of IASPS to report on the Education Budget 2005/06 with particular reference to any implications for SACRE.	
14.	2005 SACRE ANNUAL CONFERENCE	
	The RE Consultant will update SACRE on planning for the 2005 SACRE Annual Conference including a proposal to use the Conference to launch the new Collective Worship Guidance.	
15.	DELEGATE TO NASACRE AGM	
	To consider sending a delegate to the National Association of Standing Advisory Councils on Religious Education (NASACRE) Annual General Meeting to be held 10.00 a.m. Tuesday 19th April, 2005 at the Council House, Birmingham.	
16.	FUTURE MEETING DATES	
	To note that future meetings of SACRE will be held at 2.00 p.m. at Brockington, 35 Hafod Road, Hereford on the following dates:	
	<ul style="list-style-type: none"> • Friday, 24th June, 2005 • Monday, 28th November, 2005 • Monday, 20th March, 2006 	

COUNTY OF HEREFORDSHIRE DISTRICT COUNCIL

MINUTES of the meeting of Standing Advisory Council for Religious Education (SACRE) held at Council Chamber, Brockington, 35 Hafod Road, Hereford on Monday, 29th November, 2004 at 2.00 p.m.

Present: Councillor J. Stone (Chairman)

Councillors: Mrs. W.U. Attfield, Mrs. C. Ault, Mrs. J. Brown, Dr. D. Goodman, P.E. Harling, Mrs A. Mundy, Mr. Z. Pandor, Mr. J. Rendall and Mr M. Rollnick

In attendance: Councillor B.F. Ashton (Chairman – Education Scrutiny Committee)

12. APOLOGIES FOR ABSENCE

Apologies were received from Revd. P. Barlow, Father M. Donnelly, Ms. S. McCamley, Ms. K. Mayglothing and Revd I. Terry.

13. NAMED SUBSTITUTES

There were no substitutes.

14. MINUTES

RESOLVED: That the minutes of the meeting held on 28th June, 2004 be approved and signed by the Chairman.

15. RESPONSE TO WRITTEN PUBLIC QUESTIONS

No written questions had been received.

16. REPRESENTATION OF OTHER FAITH GROUPS ON SACRE

The Head of Inspection, Advice and School Performance reported that no further progress had been made in appointing representatives from other faith groups not currently represented on SACRE. He requested that should SACRE members become aware of possible representatives he be made aware so that contact could be made. He had received letters from the National Hindu Council concerning Hindu representation. However, they had not been forthcoming in proposing a local representative.

M. Rollnick circulated information concerning the Heartstone Photodocumentary – Auschwitz-Birkenau, the March of the Living and Holocaust Memorial Day.

RESOLVED: That the report be noted and the representation of Other Faith Groups be kept on future agendas.

17. UPDATE ON THE DEVELOPMENT OF A NON-STATUTORY FRAMEWORK FOR RELIGIOUS EDUCATION

The RE Consultant reported upon a number of developments or amendments to the

non-statutory national framework that had gone on since the last meeting. She reported that the Framework, copies of which were issued to SACRE members at the meeting, had been launched in London by Charles Clarke, Secretary of State for Education and Skills.

She briefly outlined some of the key messages imparted by the various speakers at the launch conference and reported that Schemes of Work to accompany the framework would be issued in due course.

On a local level some concern was expressed that schools may see the Framework as a successor to the locally agreed syllabus. It was emphasised that this was not the case and SACRE requested that a letter be sent to all schools, including Aided Schools (Heads and RE co-ordinators) setting out in clear terms the position. It was agreed that SACRE would not issue the framework to schools directly, but that the letter should inform schools of how to get copies if they so wished.

The RE Consultant reported that the non-statutory national framework would inform the next review of the agreed syllabus.

RESOLVED: That the report be noted and a letter be sent to all schools setting out in clear terms the position regarding the non-statutory national framework.

18. OFSTED CONSULTATION PAPER ON THE NEW INSPECTION FRAMEWORK

The Head of Inspection, Advice and School Performance reported that in recent years a raft of changes had been made to school inspections. The current framework 'Inspecting Schools' had been published by Ofsted in May 2003 to implement refinements in the approach to inspection. A consultation document 'Framework for inspecting Schools' (copies of which had been issued to Members) had recently been issued by Ofsted setting out the requirements for school inspections in England from September 2005. He commented that the main features of the new inspections would be: short, sharp inspections; shorter notice of inspections; smaller inspection teams; more frequent inspections and more emphasis placed on the school's own self evaluation evidence.

The RE Consultant highlighted that currently there was a requirement for inspection reports to report on the provision of RE in schools. However, under the new method of inspection RE was unlikely to be mentioned. This would make it very difficult, particularly for SACREs, to gauge the performance of RE in schools.

SACRE debated the issue and noted that most of the consultation document concerned other aspects of Education. However, SACRE were of the opinion that a suitable response, based on how the new inspection framework would ensure that the provision and quality of RE was evaluated, should be submitted by the Chairman under question 8.

RESOLVED: That the report be noted and the Chairman be authorised to respond to the consultation in terms outlined above.

19. SACRE MONITORING OF OFSTED INSPECTIONS

SACRE considered the future monitoring of RE by SACRE following Ofsted inspections in relation to Religious Education.

The Head of Inspection, Advice and School Performance reminded Members that currently a composite report was prepared by the RE Consultant based on the RE

performance reported in Ofsted inspection reports covering a 6 to 9 month period. In view of the proposed changes outlined in the previous agenda item concerning the limited level of reporting by Ofsted, this method of reporting to SACRE was unlikely to continue. He also reminded Members that, in an attempt to widen the collection of information on RE in schools, Mr M. Carter and the RE Consultant undertook a series of visits to schools, the results of which were reported to the 23rd March 2004 meeting. SACRE noted that a further series of visits to discuss RE with Headteachers and RE Coordinators (4 Secondary and 10 primary schools) was currently being planned.

In view of the reduced level of information available via Ofsted inspection reports, SACRE reaffirmed its recommendation to the LEA that RE discussion visits to schools be continued.

RESOLVED: That the LEA be recommended to continue undertaking RE discussion visits to schools.

20. CHAIRMANS LETTER TO SCHOOLS FOLLOWING AN OFSTED INSPECTION

SACRE reviewed the current practice of the Chairman sending letters to schools following the reporting of a schools Ofsted inspection results.

The Head of Inspection, Advice and School Performance reported that, in view of the changes to Ofsted inspection reporting, and subsequent reporting to SACRE, as discussed earlier in the meeting, the current practice of the Chairman sending an individual letter to schools following the reporting of the RE content of the Ofsted inspection report needed to be reconsidered.

SACRE noted that in an attempt to draw a line under the current round of inspections the Chairman had written in October to all schools reaffirming the valuable work undertaken in Religious Education.

RESOLVED: That when a method of reporting to SACRE on individual schools has been clarified the matter of a Chairman's letter be reconsidered.

21. KEY STAGE 3 STRATEGY - UPDATE

SACRE were informed of the further development of a Key Stage 3 strategy in relation to Religious Education.

SACRE noted that thanks to 'Beacon School' funding and the pooling of other funding, training events to further the rollout of aspects of the strategy had been held. The events had been well attended, mainly because supply costs were covered. The opportunity had also been taken to share examples of good practice. Work on developing the ICT theme was proposed.

RESOLVED: That the report be noted.

22. LEA GUIDANCE ON A COLLECTIVE WORSHIP POLICY

SACRE received an oral report on the development of guidance on Collective Worship in primary schools.

Jonathan Rendall praised the work of the Working Party in drafting the Collective Worship Policy and Guidelines entitled "Finding Treasure". While there were still one or two areas of work to do he anticipated the draft guidance would be completed by

the end of December 2004. He circulated a draft proposal and timetable for action which included the proposed formation of a small Working Group to progress and oversee the publication and launch. He confirmed that the guidance had been produced for primary schools and that separate guidance needed to be produced for secondary schools. He reported that the Diocese held £280 to support the provision of resources.

While acknowledging the excellent work undertaken in producing the draft guidance the Head of Inspection, Advice and School Performance cautioned that a financial plan should be produced so that the LEA could consider and plan a suitable budget.

RESOLVED: That

- a) the report be noted and volunteers to work on the Working Group should contact Jonathan Rendall; and
- b) a financial plan for the production and launch be produced for consideration by the LEA.

23. SACRE ANNUAL CONFERENCE

SACRE received a report on the Herefordshire SACRE Annual Conference and gave preliminary consideration to the 2005 Annual Conference.

The Chairman and Members congratulated the RE Consultant on the 2004 SACRE Annual Conference which had been run to its usual very high standard.

The RE Consultant reported that approximately 55 people had attended the 6th Annual Conference. Attendance had included teachers, Headteachers and SACRE members. The keynote speaker had been Graham Langtree, QCA Officer for RE, on the theme 'Developing Religious Education'. He had also facilitated one of the workshop sessions. Feed back from delegates attending the conference had been very positive.

During discussion the following themes were suggested for the 2005 Conference:

- Community Cohesion;
- to invite Marion Agombar, together with her NASACRE colleagues, to be speakers;
- 'Values Education'
- discussion also explored the possibility of including Collective Worship in one of the workshop sessions.

RESOLVED: That the report be noted and a further report on proposals for the 2005 Annual Conference be made to the March 2005 meeting.

24. REVIEW OF THE RELIGIOUS EDUCATION AGREED SYLLABUS

SACRE considered requesting the LEA to set up a Herefordshire Religious Education Agreed Syllabus Conference to review the Herefordshire Religious Education Syllabus.

The RE Consultant reported that the current RE Syllabus had been introduced in September 2001. It was a requirement that the Syllabus be reviewed every 5 years. Therefore the current syllabus would need to be reviewed and agreed by September 2006. She advised that while a major review of the syllabus was not envisaged, time would be needed to undertake consultation and redrafting, particularly following the publication of the non-statutory national framework.

The meeting was advised that such a review was carried out by a separate legal body called an Agreed Syllabus Conference. The agenda report set out the legal standing of an Agreed Syllabus Conference, its operation and proposals concerning membership and meeting times.

SACRE noted that the RE Consultant would be proposing to the Syllabus Conference that three working groups be formed to work on the re-drafting based on the following stages in education: Reception and Key Stage 1; Key Stage 2; Secondary and 14 to 19 for which volunteers would be welcome.

RESOLVED: That

- a) **The report be noted and the LEA be requested to initiate a review of the Religious Education Syllabus by establishing the Herefordshire Religious Education Agreed Syllabus Conference;**
- b) **The membership of the Herefordshire Religious Education Agreed Syllabus Conference be the same as Herefordshire SACRE, excluding the co-opted members; and**
- c) **The RE Consultant undertake preliminary consultation to inform the syllabus review.**

25. OFFICER SUPPORT TO SACRE

The Head of Inspection, Advice and School Performance reported that he was reviewing the level of support devoted by the LEA to the work of SACRE.

He proposed that while he would continue to maintain a strategic overview and attend meetings an assistant could undertake some of the administrative duties. If this could be arranged, this change would enable a more consistent approach to the support work for SACRE, particularly in view of the anticipated additional workload created by the various inspection and monitoring changes and the review of the syllabus discussed elsewhere on the agenda. He emphasised that no change was proposed in the excellent work carried out by the RE Consultant or the support from the County Secretary and Solicitors Department.

SACRE wished to record their debt of gratitude to Mr St. George for his work in supporting SACRE.

RESOLVED: That the report be noted.

26. HEREFORDSHIRE'S DELEGATE TO QCA CONFERENCE

SACRE noted that, in view of the timescale to make nominations, the RE Consultant had been nominated to attend the QCA Conference in London on 9th December. The theme for the conference would be 'National Developments and the work of SACREs' which, it was anticipated, would include information on the implementation of the Non-statutory National Framework.

RESOLVED: That the nomination of the RE Consultant be confirmed.

27. DRAFT HEREFORDSHIRE SACRE ANNUAL REPORT FOR THE ACADEMIC YEAR 2003/2004

SACRE were invited to comment on the draft SACRE Annual Report for the academic year September 2003 to July 2004 prior to submission to QCA.

The Committee Officer (Scrutiny) presented the draft annual report for consideration, copies having been distributed to Members with the agenda.

SACRE considered the draft and commented in relation to references to Aided schools.

RESOLVED: That subject to amendments concerning Aided schools and final proof reading the SACRE Annual Report for the academic year September 2003 to July 2004 be submitted to QCA.

28. FUTURE MEETINGS OF SACRE

SACRE noted that the next scheduled meeting would be held at 2.00 p.m. on 7th March, 2005.

Further provisional dates were listed in the agenda. The suggested date of 4th July 2005 would be revised. The Clerk to SACRE would confirm the meeting dates for 2005/06 in due course.

RESOLVED: That the report be noted.

**29. ADDITIONAL ITEM - AN EVALUATION OF THE WORK OF STANDING
ADVISORY COUNCILS FOR RELIGIOUS EDUCATION**

Since publication of the agenda for the meeting, Ofsted had published a report entitled 'An evaluation of the work of Standing Advisory Councils for Religious Education'. Copies of the publication, obtained from the Ofsted web site, were issued to Members at the meeting.

Ofsted had produced the report at the request of Her Majesty's Chief Inspector (HMCI) to inform his advice to the Secretary of State about the future policy for religious education (RE), collective worship and Standing Advisory Councils for Religious Education (SACREs), and to inform the continuing debate about the role of SACREs.

The RE Consultant and the Committee Officer (Scrutiny) reported that from a cursory reading the report contained a number of important issues for SACRE and recommended that the report be debated at the next meeting.

RESOLVED: That the implications of the report be debated at the next meeting.

The meeting ended at 3.57 p.m.

CHAIRMAN

MONITORING OF RELIGIOUS EDUCATION IN SCHOOLS

Report By: Consultant For Religious Education

Purpose

1. To report on the monitoring of Religious Education in Herefordshire schools.

Background

2. The review of Ofsted inspection reports in Herefordshire schools in relation to Religious Education, Collective Worship and Spiritual Moral Social Cultural development included 2 Community High Schools and 1 Community Primary School. The following is a summary of the findings. The Consultant for Religious Education will report further upon the monitoring of RE at schools at the meeting.

Report

Religious Education - Secondary

Strengths:

3. RE in both secondary schools is characterised by very good teaching and learning in **KS3**. Both use a wide range of effective teaching and learning strategies to develop pupils skills and understanding of key concepts and questions. Both have very good leadership and management. Whilst the standards by the end of KS3 in one school are satisfactory, in the other they are well above the expectations of the Agreed Syllabus.

Weaknesses

4. **Neither of these secondary schools meets the statutory requirements for provision in KS4.** In one a module of RE per year is proposed, not to be taught by the RE staff and not yet implemented. It is unlikely that this will meet the expectations of the Agreed Syllabus and, as the Ofsted report says '*it is rare for such a module to provide any more than partial coverage*' In the other the lack of provision is put down to staffing problems, and no immediate plans to address RE requirements appear to be in place.
5. One of these two schools is also failing to meet statutory requirements for RE in the 6th form.
6. Both schools in the sample have some excellent specialist teaching in KS3 and yet neither extends this into KS4 for all pupils. This is a whole school management issue.
7. SACRE should consider whether to bring the matter of the provision for RE at KS4 and Post 16 to the attention of the LEA?

Religious Education - Primary:

8. Only one inspection report was available in this sample. In this school the provision for RE was satisfactory and the teaching and learning was at least good and sometimes very good. Standards met the requirements of the Agreed Syllabus. An enthusiastic and

Further information on the subject of this report is available from Joyce Mackley, Consultant for Religious Education by contacting (01432) 260813.

experienced co-ordinator led the subject well – the only aspect for development was finding opportunities to monitor RE across the school.

Collective Worship:

9. Issues of compliance remain in both secondary schools.

Spiritual Moral Social Cultural development of pupils:

10. SMSC was judged to be very good in one secondary school and good overall in the other, although lack of provision for RE at KS4 denied the good opportunities for spiritual development found in KS3.
11. SMSC was judged good in the primary school.

RECOMMENDATION

THAT the report be noted and consideration be given to bring the matter of the provision for RE at KS4 and Post 16 to the attention of the LEA.

BACKGROUND PAPERS

- None identified.

EXAMINATION RESULTS IN RELIGIOUS STUDIES 1999 TO 2004

Report By:

Purpose

1. To inform SACRE of Herefordshire's examination results in Religious Studies for the period 1999 to 2004 when compared to the national trend.

Report

2. Following on from the reporting of examination statistics in the SACRE Annual report, further research has been undertaken to try to ascertain how Herefordshire is performing in Religious Education against the national trend. Unfortunately data is unavailable for Religious Education. However, the attached chart has been produced using information available for Religious Studies.
3. While this is by no means a comprehensive analysis of the situation, the information provided would indicate a satisfactory position, particularly following the introduction of the revised syllabus in September 2001.
4. It is suggested that, to assist SACRE in undertaking its monitoring role, as and when further data becomes available it be added to this database as a basis for future reports.

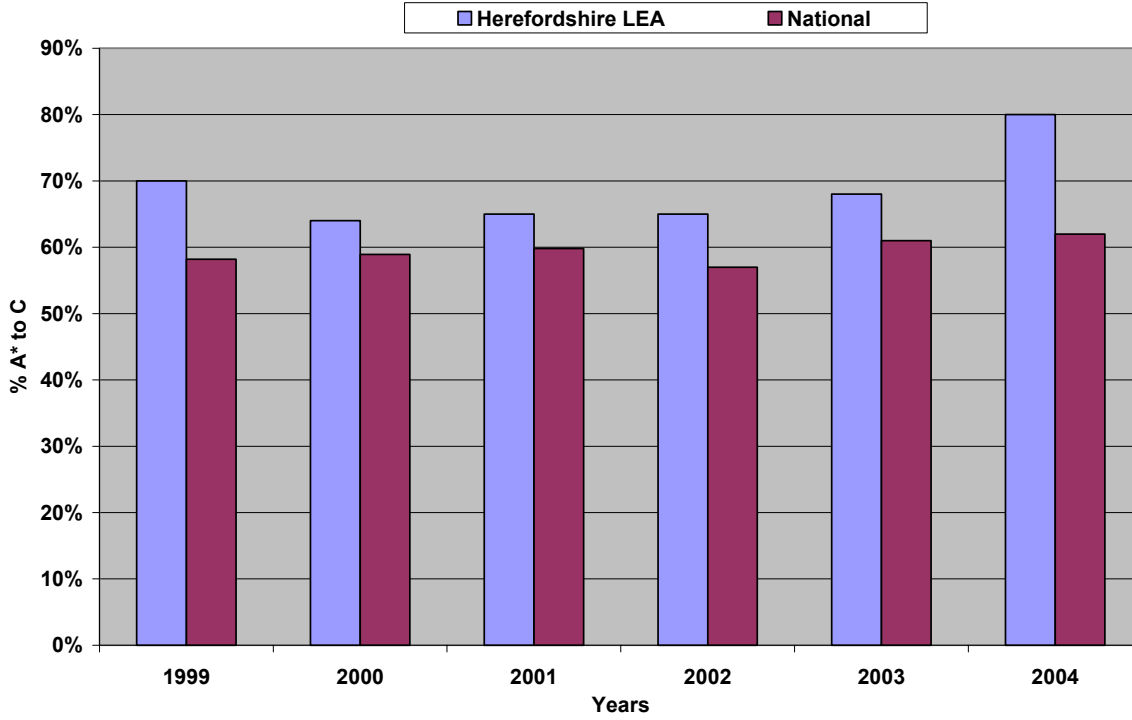
RECOMMENDATION

THAT the position indicated in the report be noted and further reports be presented as data becomes available.

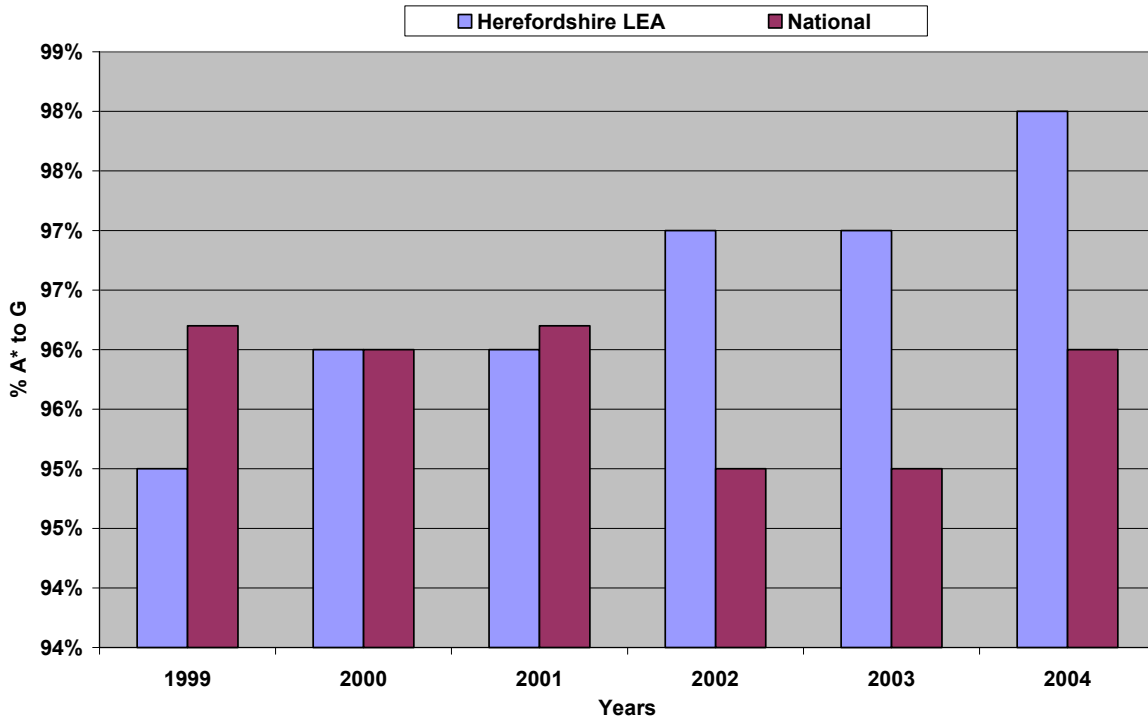
BACKGROUND PAPERS

- None identified.

Religious Studies 1999 - 2004



Religious Studies 1999 - 2004



	% A*-C					
Religious Studies	1999	2000	2001	2002	2003	2004
Herefordshire LEA	70%	64%	65%	65%	68%	80%
National	58%	59%	60%	57%	61%	62%

	% A*-G					
Religious Studies	1999	2000	2001	2002	2003	2004
Herefordshire LEA	95%	96%	96%	97%	97%	98%
National	96%	96%	96%	95%	95%	96%

